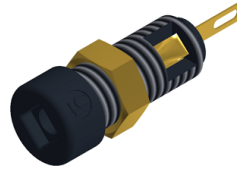


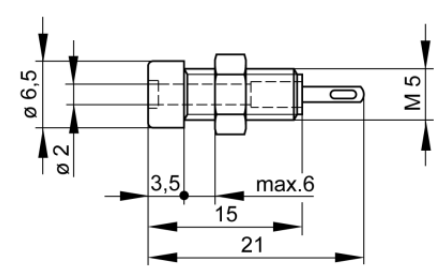


Sockets

MBI 1 Au



Product	MBI 1 Au
description	2 mm diameter miniature socket, insulated, gold-plated copper beryllium contact (spring-loaded), with solder connection. Suitable for installation in equipment chassis and switch panels up to a maximum wall thickness of 5 mm.
operating instruction	BA205
article-no. / *colour	9303087xx <div style="display: flex; justify-content: space-around; align-items: center;"> <div style="text-align: center;">  00 black </div> <div style="text-align: center;">  01 red </div> </div> <div style="text-align: right; margin-top: 10px;">Au</div>
drawing	
technical data	
connection	solder connection
rated voltage ⁽¹⁾	30 VAC / 60 VDC
measurement cat. acc. to IEC 61010	O ⁽³⁾
rated current ⁽¹⁾ (consider derating curve)	6 A
material socket	copper - beryllium, gold plated
housing material	PA
temperature range acc. To IEC61010 ⁽²⁾	-20 °C to +60 °C
standard	IEC 61010

2 mm system

⁽¹⁾ for normal environmental conditions -5°C to +40°C

⁽²⁾ contact the manufacturer for applications at deviating temperature ranges

⁽³⁾ without rated measurement category, for other circuits that are not directly connected to mains
stand: 10.01.2019