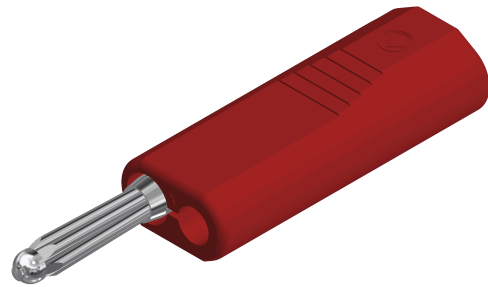
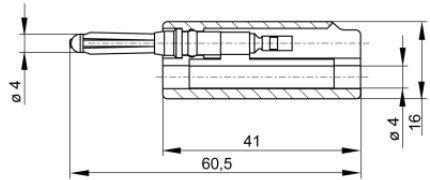


Plugs

BSB 300



Product	BSB 300
description	Multiple-spring wire plug with coupling located parallel to the connector pin. In this way, the plugs can be connected together without shorting. Solder connection up to maximum cable cross-section of 1.5 mm ² . Nickel-plated brass contact material.
operating instruction	BA409
article-no. / *colour	9312941xx <div style="display: flex; justify-content: space-around; align-items: center;"> <div style="text-align: center;">● 00 black</div> <div style="text-align: center;">● 01 red</div> <div style="text-align: center;">● 02 blue</div> <div style="text-align: center;">● 03 yellow</div> <div style="text-align: center;">● 04 green</div> </div> <div style="text-align: right; border: 1px solid black; padding: 2px; margin-top: 5px;">Ni</div>
drawing	
technical data	
connection	solder connection
rated voltage ⁽¹⁾	30 VAC / 60 VDC
measurement cat. acc. to IEC 61010	O ⁽³⁾
rated current ⁽¹⁾ (consider derating curve)	16 A
material plug	brass, nickel plated
housing material	PP
temperature range acc. To IEC61010 ⁽²⁾	-25 °C to +100 °C
flammability class acc. to UL 94 (only valid for basic material of housing)	HB
standard	IEC 61010

4 mm system

⁽¹⁾ for normal environmental conditions -5°C to +40°C

⁽²⁾ contact the manufacturer for applications at deviating temperature ranges

⁽³⁾ without rated measurement category, for other circuits that are not directly connected to mains
stand: 06.05.2019