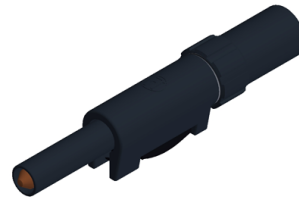
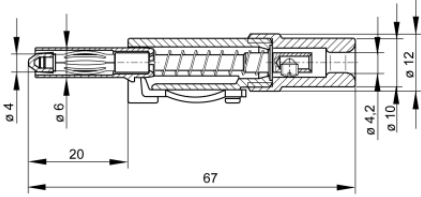


Plugs

SLS 20 B



4 mm sliding sleeve system

Product	SLS 20 B
description	<p>Touch protected plug to assemble with screw connection for cables up to 1.5mm². Insulated by latching and sprung insulating sleeve, to be released by pressure on the lateral locking spring. plug with contact spring, 4mm diameter.</p> <p>*Apply to this typ 150 VDC, CAT II; according IEC / EN 61010-031 item 6.4.2; allowed for devices that are equipped with terminals which cannot accept fully shrouded connectors.</p>
operating instruction	BA413
article-no. / *colour	<p>9318251xx</p> <div style="display: flex; justify-content: space-around; align-items: center;"> <div style="text-align: center;">● 00 black</div> <div style="text-align: center;">● 01 red</div> <div style="text-align: center;">● 02 blue</div> <div style="text-align: center;">● 03 yellow</div> <div style="text-align: center;">● 04 green</div> <div style="text-align: center;">● 07 white</div> </div> <p style="text-align: right;">Ni</p>
drawing	
technical data	
connection	screw terminal
rated voltage ⁽¹⁾	30 VAC / 60 VDC
measurement cat. acc. to IEC 61010	O ⁽³⁾
rated current ⁽¹⁾ (consider derating curve)	16 A
material plug	brass, nickel plated
housing material	POM
temperature range acc. To IEC61010 ⁽²⁾	-25 °C to +80 °C

standard	IEC 61010
----------	-----------

⁽¹⁾ for normal environmental conditions -5°C to +40°C

⁽²⁾ contact the manufacturer for applications at deviating temperature ranges

⁽³⁾ without rated measurement category, for other circuits that are not directly connected to mains

stand: 07.05.2019