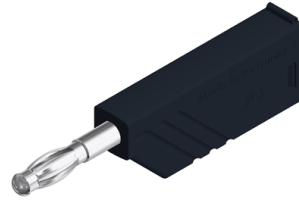
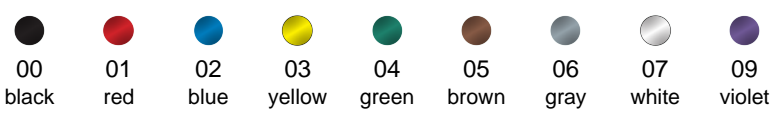
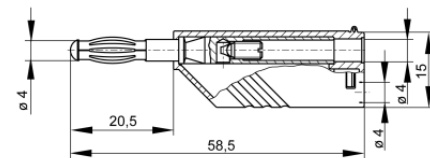


Plugs

LAS N WS



Product	LAS N WS
description	Connector for tower construction with screw connection for leads from 0.5 mm ² to 1.5 mm ² , outer diameter of lead max. 4.2 mm. Plug 4 mm with caged spring, not contact-protected. Simple assembly by Click-System.
operating instruction	BA415
article-no. / *colour	9341001xx  Ni
drawing	
technical data	
connection	screw terminal
rated voltage ⁽¹⁾	30 VAC / 60 VDC
measurement cat. acc. to IEC 61010	O ⁽³⁾
rated current ⁽¹⁾ (consider derating curve)	24 A
material plug	brass, nickel plated
housing material	PA
temperature range acc. To IEC61010 ⁽²⁾	-15 °C to +70 °C
flammability class acc. to UL 94 (only valid for basic material of housing)	V-2
standard	IEC 61010

4 mm system

⁽¹⁾ for normal environmental conditions -5°C to +40°C

⁽²⁾ contact the manufacturer for applications at deviating temperature ranges

⁽³⁾ without rated measurement category, for other circuits that are not directly connected to mains

stand: 19.06.2019